



Powered by  
**Future**se.uni

# IIT Jodhpur's PGD & MTech.\* in Data Engineering and Agentic AI

Integrated Program with AIML, GenAI and Data Science

Indian Institute of Technology, Jodhpur



12

Months Program



IIT

Alumni Status

Live Online Sessions by IIT Jodhpur  
Faculty and ex-MAANG Experts with  
Campus Immersion

AY 2026 - 27 | Cohort 1 (Batch 6)

[Apply Now](#)

\*Conditions Apply (Admission to MTech. delivered in executive mode is subject to IIT Jodhpur approval) The information provided in this brochure is official and final and supersedes all other information either exchanged or perceived.



# Market Context

## Every Major Company in India Is Rebuilding Around AI. The People Who Can Lead That Work Don't Exist Yet.

BFSI, healthcare, retail, manufacturing, every sector is rebuilding its core operations around AI. Companies are not looking for people who understand data in theory. They are looking for engineers who can build AI-first data systems, deploy intelligent pipelines, and own data infrastructure in production.

That role is now the most in-demand, highest-paying, and hardest-to-fill position in the Indian job market.

**\$20B+**

Indian data and analytics market projected by 2030

(NASSCOM, various industry analyses)

**1 Million+**

AI and data professionals India's tech industry will need by 2026

(The Economic Times, Times of India, recent industry reports)

**₹25L–65L**

Data professionals earn ₹1 crore+ annually with 3–10 years' experience.

(6figr, talent trends reports 2025–26)





# The Market is Open

The Market Is Open. The Question Is Whether You Walk Into It or Watch It From the Outside.

## Without The Right Foundation

**YEAR 01** - An entry-level role. Waiting for an AI or data project to land on your desk.

**YEAR 02** - Lateral applications and upskilling courses, trying to close a gap that keeps widening.

## With This Program

**YEAR 01** - Building real AI-first data systems under IIT Jodhpur faculty. Earning your PG Diploma from IIT Jodhpur.

**YEAR 02** - Eligible to transition to IIT Jodhpur's Executive MTech. Graduating with a degree, deployed projects, and job-ready skills.

The difference is not how much you know. It is what you can prove, and who is standing behind that proof.

## This Program Is For You If:



You are a working professional in tech and want to move into AI-first data engineering — not a lateral move, but a genuine career reset with an IIT credential behind it.



You are mid-career and hitting a ceiling — the right credential is real, and this is the structured, institution-backed way through it.



You want to switch into data and AI completely — not a course, not a certificate, a PG Diploma from IIT Jodhpur with a clear pathway to an Executive MTech.



# Director Message



*"Our vision is to equip learners pursuing the **PG Diploma and M.Tech. in Data Engineering and Agentic AI** with the necessary modern skills and competencies to participate in a rapidly transforming technological knowledge ecosystem, shaped by data engineering and artificial intelligence. This will ensure a workforce ready for the new and emerging job roles — putting India at the forefront of rapid global technological advancements."*

**Prof. Avinash Kumar Agarwal**  
Director, IIT Jodhpur

Prof. Avinash Kumar Agarwal is currently the Director at IIT Jodhpur. Prior to joining IIT Jodhpur, he served as an SBI Endowed Chair Professor and J C Bose National Fellow at the Department of Mechanical Engineering, IIT Kanpur. His research interests include IC engines, combustion, alternative fuels, optical diagnostics, particulate and emission control.

Prof. Agarwal has published over 540+ peer-reviewed international journal and conference papers, 70+ edited books, and 125+ book chapters attracting more than 17,500+ Scopus and more than 26,000+ Google Scholar citations. He is the associate principal editor of the prestigious "Fuel" Journal.

For his outstanding contributions, Prof. Agarwal has been conferred upon several prominent recognitions including the J C Bose National Fellowship (2019) by SERB, the Clarivate Analytics India Citation Award (2017) in Engineering and Technology, and the prestigious Shanti Swarup Bhatnagar Prize (2016) in Engineering Sciences.

He is an elected Fellow of the Society of Automotive Engineers International (USA), American Society of Mechanical Engineers, Indian National Academy of Engineering, Royal Society of Chemistry, National Academy of Science Allahabad, American Association for Advancement in Science (USA), Combustion Institute (USA), and The World Academy of Sciences.





# Skills. A Diploma. Proof.

And a Network That Actually Helps.



## PG Diploma from IIT Jodhpur

From one of India's top-ranked engineering institutions. NIRF Rank 27 in Engineering 2025.



## IIT Jodhpur Alumni Status

Access to IIT Jodhpur's alumni network from Day 1 of graduation.



## 35 Academic Credits (PGD)

Full credit load. Graded by IIT Jodhpur faculty across two semesters.



## Pathway to Executive MTech

Complete MTech in 1 additional year. Credit transfer from PGD. No GATE required.



## Deployed Project Portfolio

AI and data systems you built, tested, and can walk any interviewer through.



## Production-Ready Capstone

A real-world AI project you design, deploy, and present to IIT Jodhpur faculty.



## Career Support from Day 1

Placement support from enrolment through your first offer.



## 540+ Hiring Partner Network

Matched to your portfolio and strengths, not blind applications.



# PG Diploma in AI-First Data Engineering and Agentic AI Integrated Program with AIML, GenAI and Data Science



Live online sessions with IIT Jodhpur faculty, combined with campus immersion at IIT Jodhpur. Not self-paced. Live, structured, cohort-based



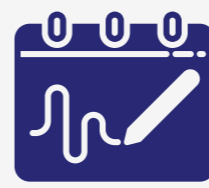
12 Months  
(PGD)



Pathway to  
MTech Year 2  
35 Credits (PGD)



56 Credits  
(PGD + MTech  
combined: 24 + 32)



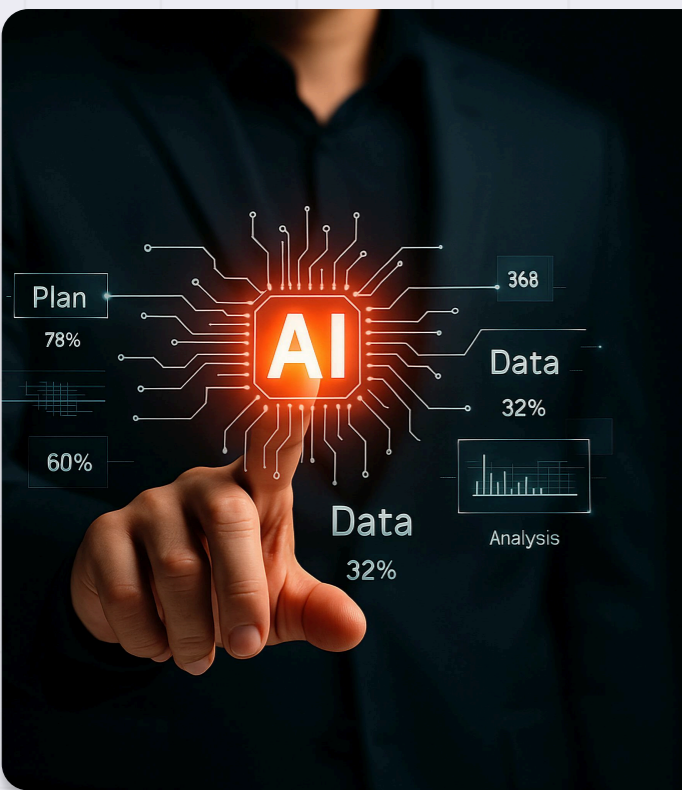
2 Semesters  
(PGD)



Starts August  
2026



Rs 3,35,000  
(PGD)



**AI-First Data Engineering**  
Design and build intelligent data pipelines — beyond ETL, into AI-integrated infrastructure built for production environments.



**Generative AI and LLM Applications**  
Build with frontier models. Prompt, fine-tune, and deploy real GenAI solutions that solve real business problems.



**Agentic AI Systems**  
Orchestrate autonomous decision-making workflows using LangChain, LangGraph, and Microsoft AutoGen.



**Cloud-Native AI Architecture**  
Build scalable AI platforms on cloud — data lakes, warehouses, integrated ML and AI services, production-ready.



# Curriculum - Year 1

**56**

**TOTAL CREDITS**  
Across 2 years

**24**

Credits Year 1

**32**

Credits Year 2

## Year 1 - PGD in Data Engineering & Agentic AI (24 Credits)

### Semester 1

Course Title	Credits
Python Programming for Data Engineering	03
Deep Learning	03
Elective	03
Elective	03
	<b>12</b>

**Choose 1:** Technical Communication / Ethics and Professional Life / System Engineering and Project Management / Intellectual Property

### Semester 2

Course Title	Credits
Agentic AI	03
Big Data Management	03
Elective	03
Elective	03
	<b>12</b>

**Choose 1** from remaining non-graded courses

## Year 1 - Two Non-Graded Courses (2 Credits) from the following list

Non-Graded Course	Credits
Technical Communication	01
Ethics and Professional Life	01
System Engineering and Project Management	01
Intellectual Property	01



## Year 2 - M.Tech In Data Engineering & Agentic AI (32 Credits)

### Semester 3

If a student opts for the thesis mode in the second year

Course Title	Credits
Thesis	16
<b>Total</b>	<b>16</b>

### Semester 4

Course Title	Credits
Thesis	16
<b>Total</b>	<b>16</b>

## Year 2 - M.Tech In Data Engineering & Agentic AI (32 Credits)

### Semester 3

If a student opts for the thesis mode in the second year

Course Title	Credits
Program Elective	03
Program Elective	03
Program Elective	03
Program Elective	03
Open Elective	02
Capstone Project	03
<b>Total</b>	<b>17</b>

### Semester 4

Course Title	Credits
Program Elective	03
Open Elective	03
Open Elective	03
Open Elective	03
Capstone Project	03
<b>Total</b>	<b>15</b>





## List Of Program Electives (Indicative)\*

**Note:** Electives are updated dynamically every term and assigned at the discretion of IIT Jodhpur faculty and Program Directors. The list below is indicative.

Elective Course Name	Credits
Pay Application Processing Fee	3
Prompt Engineering	3
Software And Data Engineering	3
Social Network Analytics	3
Foundation Models And Generative AI	3
Distributed Databases	3
Machine Learning With Big Data	3
ML/DL-Ops	3
Databases And SQL Programming	3
Virtualization And Cloud Computing	3
Financial Engineering	3
Introduction To Blockchain	3

\*Please note and it is hereby clarified that the electives list provided is indicative only, and based on the discretion of the Program Directors, only those elective courses identified by the Program Directors and faculty at IIT Jodhpur will be made available each semester. IIT Jodhpur is an institution of eminence in areas of emerging technologies and launches new courses dynamically every trimester. Therefore, the Program electives are updated on a regular basis and will be made available at the discretion of the faculty and Program Directors.



# Program Outcomes

## Program — Outcomes

01



**Build Intelligent Applications** — LLM Applications To Solve Real-World Data And Business Problems

02



**Design And Develop AI-Powered Data Systems** By Working With Modern Databases, Data Models, And Evolving Beyond ETL To AI-Integrated Data Pipelines

03



**Architect End-To-End AI-First Data Platforms**, Combining Big Data Ecosystems With LLM-Driven Intelligence Layers

04



**Develop And Orchestrate Agentic AI Systems** Using Frameworks Like LangChain, LangGraph, And Microsoft AutoGen To Enable Autonomous Decision-Making Workflows

05



**Design And Implement Scalable Storage And Processing Systems** Optimised For Both Data-Intensive And AI-Intensive Workloads

06



**Build Generative AI Applications And Multi-Agent Systems** Including Prompt Engineering, Fine-Tuning Strategies, And Custom GPT-Based Solutions

07



**Leverage Cloud Platforms To Develop AI-Native Architectures** Including Data Lakes, Warehouses, And Integrated AI/ML Services For Production-Ready Systems

08



**Apply Machine Learning And Deep Learning Techniques** In Conjunction With LLMs And Agents To Create Hybrid Intelligent Systems

09



**Design And Deploy Real-Time AI Pipelines** Capable Of Handling Streaming Data, Automation, And Adaptive Decision Systems

10



**Work On End-To-End Agentic System Development** — Model Serving, Monitoring, And Scaling In Cloud Environments

# Capstone + Projects + Mtech Transition

The projects you build here are what —  
You talk about in every job interview for the next five years.

✓ *Every Project Has To Run. Not Just Compile. Run.*

**Year 1 Capstone**  
An End-To-End AI Data Pipeline

**From Raw Data To A Deployed Intelligent System.** Presented To An IIT Jodhpur Faculty Panel At Campus Immersion.

**Year 2 Capstone**  
A Multi-Phase AI System

**Built Across Semesters 3 And 4. Worth 6 Credits Total.** Defended In Front Of IIT Jodhpur Faculty. This Project Leads Your Resume And Your Interview.

## The Kind Of Systems Built In This Program:



Multi-Agent  
Financial Intelligence  
System



Real-Time Sentiment  
Engine For Financial  
Markets



LLM-Augmented  
Research Assistant With  
Memory And Retrieval



Agentic Data Pipeline  
With Automated  
Anomaly Detection



GenAI-Powered  
Business Intelligence  
Dashboard



AI-Powered QA  
Automation  
System

Enhance your professional growth by leveraging your academic credits from the **PG Diploma Program** and transfer to **IIT Jodhpur's MTech. program in executive mode** to unlock new career opportunities.



# Program Directors



PROF. DIP SANKAR BANERJEE

## Prof. Dip Sankar Banerjee

Associate Professor  
IIT Jodhpur

Prof. Dip Sankar Banerjee is an Associate Professor at IIT Jodhpur since December 2020. He completed his PhD in Computer Science and Engineering from the Indian Institute of Information Technology Hyderabad in 2014. He was a postdoc at the Ohio State University from 2015 to 2016. His research interests are broadly in the area of High-Performance Computing, Computing Systems, Computer Architecture, and Data Analytics.



PROF. SUBHASH BHAGAT

## Prof. Subhash Bhagat

Assistant Professor, Department of Mathematics  
IIT Jodhpur

Prof. Subhash Bhagat is an Assistant Professor in the Department of Mathematics at IIT Jodhpur in Rajasthan, India. Prior to this position, he held postdoctoral fellowships at the University of Quebec in Outaouais and the University of Ottawa in Canada. He received his PhD from the Advanced Computing and Microelectronics Unit at the Indian Statistical Institute in Kolkata. His research interests are in the areas of distributed systems and algorithms, specifically focused on distributed algorithms for Swarm Robots and Autonomous Multi-Agent Systems, Internet of Robotic Things (IoRT), autonomous mobile robotic sensors, and security in distributed computing.





# Esteemed Advisors



## Dr. Jagdip Singh

PhD Co-Director  
Master of Business Analytics and Intelligence



Dr. Jagdip Singh is a globally recognized expert in organizational frontline effectiveness. He has been honored with prestigious awards, including the Weatherhead School of Management's Research Recognition Award and the University's Faculty Distinguished Research Award. With a focus on customer connections, Jagdip has made enduring contributions to the field. He co-founded the interdisciplinary "Organizational Frontlines Research" initiative and has received accolades for his reviewing efforts from esteemed journals.

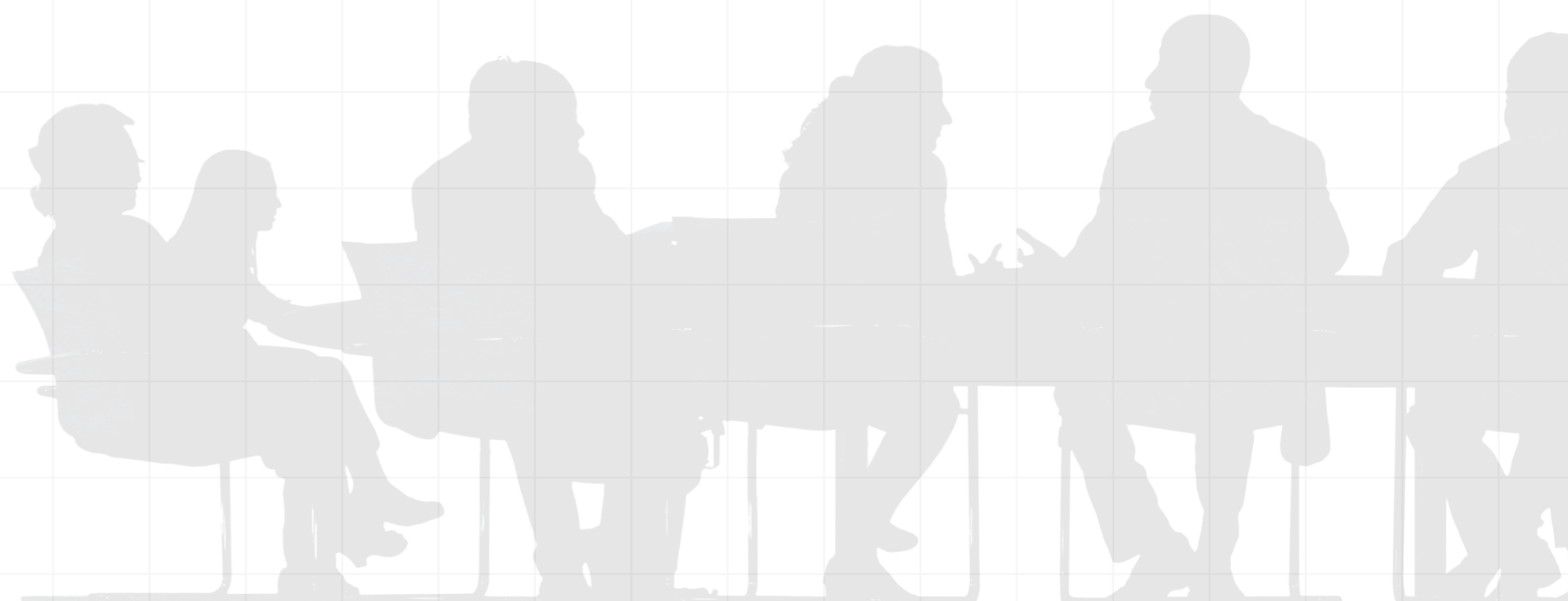


## Dr. Kamlesh Mathur

PhD Co-Director,  
Master of Business Analytics and Intelligence



Dr. Kamlesh Mathur is an expert in supply chain logistics, focusing on the distribution aspects of the supply chain and its impact on business operations. His research addresses efficient routing and scheduling of delivery vehicles, leading to significant cost savings. He also studies the optimal location of claim and service centers for enhanced efficiency and effectiveness. Dr. Mathur's work has been published in esteemed journals such as Transportation Science, Computers and Operations Research, and European Journal of Operations Research.



# IIT Jodhpur Campus immersions

Campus immersion is a required element of the program. Learners are required to attend campus activities and sessions at the IIT Jodhpur campus. There will be one immersion per academic year, conducted for 5 to 7 days. Attending one immersion is mandatory for students.

Learners will get a live classroom experience, with the opportunity to meet and learn in person from the faculty at IIT Jodhpur and engage in peer learning, presentations, and project work. The immersion timetable will be set by IIT Jodhpur and will be communicated to students in advance post onset of the program.

The policies and requirements regarding campus immersion, including the number of immersions a student must attend, are subject to review and final approval by IIT Jodhpur. While it is currently planned that students must attend at least one immersion per academic year, these policies may be revised based on resource availability. Any changes will be communicated accordingly.





## What happens during an immersion week:



### Live Capstone Review

Present your architecture and project to IIT Jodhpur faculty. Real feedback from the people who built this curriculum.



### Peer Learning and Collaboration

Work alongside your cohort in person. Lab sessions, group presentations, project reviews.



### Cohort Time

Evenings belong to you and your cohort.



## Immersion Details

<b>Frequency:</b>	Once per academic year (Year 1 and Year 2)
<b>Timing:</b>	5 to 7 days per immersion
<b>Advance Notice:</b>	Usually May–July or December (decided by EEP Office)
<b>Advance Notice:</b>	Yes — students informed in advance by EEP Office



The policies and requirements regarding campus immersion, including the number of immersions a student must attend, are subject to review and final approval by IIT Jodhpur. While it is currently planned that students must attend at least one immersion per academic year, these policies may be revised based on resource availability. Any changes will be communicated accordingly.

**Immersion weeks are scheduled in advance. They are required, not optional.**



# Career Opportunities

## Potential Job Roles

Agentic AI  
Engineer

AVERAGE SALARY

₹30L - ₹60L+

AI/ML  
Engineer

AVERAGE SALARY

₹25L - ₹55L+

Data  
Scientist

AVERAGE SALARY

₹20L - ₹55L

Data  
Architect

AVERAGE SALARY

₹30L - ₹50L+

LLM / GenAI  
Application Developer

AVERAGE SALARY

₹28L - ₹55L+

Machine Learning  
Engineer

AVERAGE SALARY

₹25L - ₹50L+

Data Science  
Manager

AVERAGE SALARY

₹28L+

AI Product  
Manager

AVERAGE SALARY

₹25L - ₹45L+

Data Visualization  
Specialist

AVERAGE SALARY

₹24L+

MLOps / AI  
Platform Engineer

AVERAGE SALARY

₹22L - ₹45L+

Business  
Intelligence Analyst

AVERAGE SALARY

₹10L - ₹20L

AI Research  
Scientist

AVERAGE SALARY

₹18L - ₹50L+



## Career Support — From Day 1 To Your Next Role

### Month 01:

- Month 01: Skill mapping · GitHub portfolio setup · Industry orientation
- Month 06: Mock interviews · Role-specific mentoring · 1:1 sessions for top performers

### Month 02:

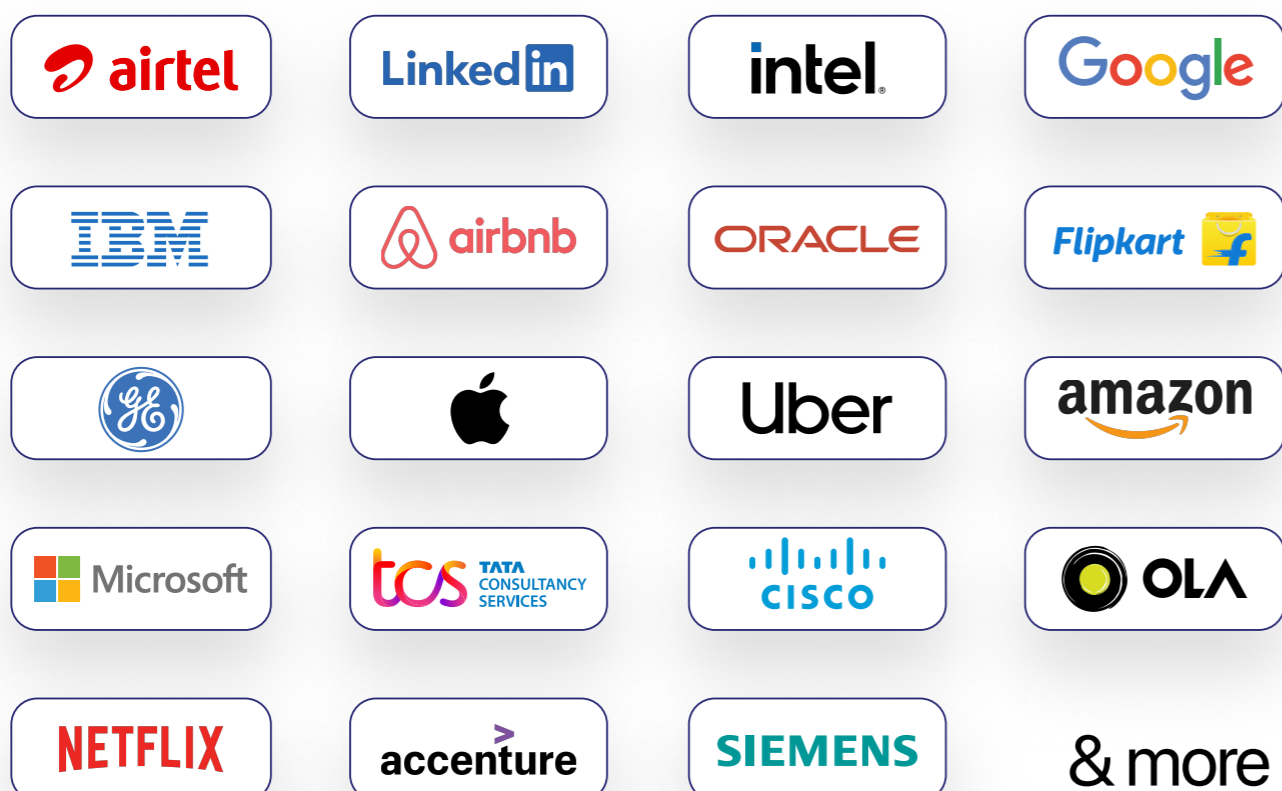
- Month 01: Resume and LinkedIn · Company introductions begin
- Month 06: Active placement drives · Offer and negotiation support



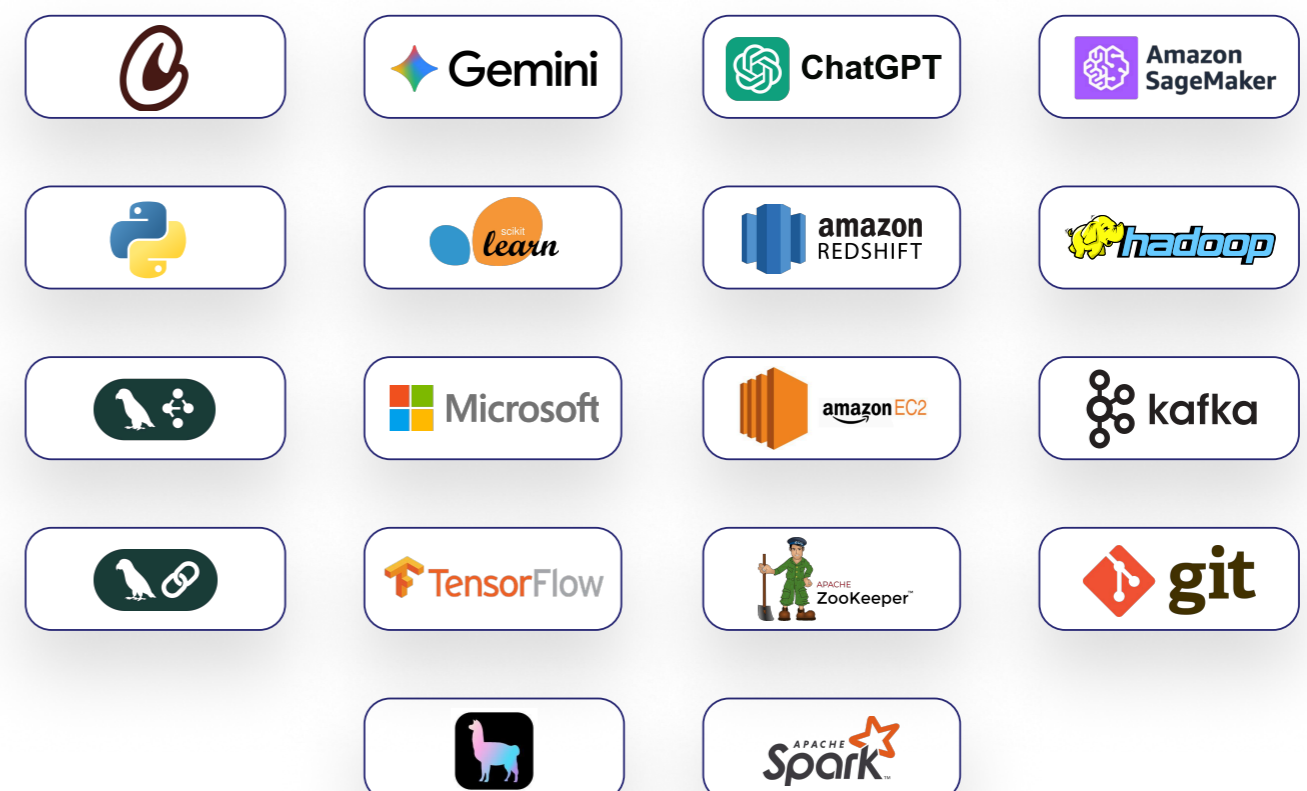
540+ hiring partners. Matched to your portfolio, not blind applications.

# Recruiters + Tools covered

### Potential Recruiters




### Tools Covered





# Student Journey

- 01 ▶  Submit your Application
- 02 ▶  Appear for the Pre-screening Test
- 03 ▶  Pay the Application Processing Fee
- 04 ▶  Receive your Offer Letter from IIT Jodhpur and Complete your Full Payment
- 05 ▶  Strengthen your Foundations through Futureense Bridge Courses
- 06 ▶  Begin your IIT Jodhpur PG Diploma Degree
- 07 ▶  Become an IIT Jodhpur PG Diploma Graduate



Transfer your credits towards  
**IIT Jodhpur Executive Mode  
MTech Program!\***


\*Based on the PD's discretion and the graduating requirements, you can transition to the Executive Mode MTech Program.

# Admission — Who Can Apply

**Your Seat Is Earned. — Here Is How.**


*Merit-based. Limited seats. Rolling applications.*


## Who Can Apply:




**Eligibility —**  
*For students who want to*

**ONLY Pursue**  
**PGD In Data Engineering\***



 **Minimum 50% Marks In Undergraduation Or Postgraduation:**

- ▶ BTech Degree
- ▶ BSc / BCA + MSc / MCA / Master's degree in science or a related field

 **Minimum 1 Year Of Work Experience Mandatory** (After Qualifying Degree) At Time Of Registration

(The applicant must qualify the pre-screen test to be eligible for the program)

\*If students whose eligibility criteria do not pass the MTech program delivered in Executive Mode threshold, they will not be allowed for MTech.

\*Admission to MTech program delivered in Executive Mode is based on the discretion of the Program Director.




**Eligibility —**  
*For students who want to*


**Upgrade To**  
**MTech After PGD\***



 **Minimum 60% Marks In Undergraduation:**

- ▶ BTech Degree with minimum 50% marks
- ▶ BSc / BCA + MSc / MCA / Master's in science or related field with minimum 50% marks
- ▶ Any 4-year undergraduate degree in STEM with minimum 50% marks

 **First Division In** Under-Graduation / Post-Graduation

 **Minimum 2 Years Of Work Experience Mandatory** (After Qualifying Degree) At Time Of Registration

 **Minimum CGPA Of 6.0** And Above In PGD To Transition To MTech

(The applicant must qualify the pre-screen test to be eligible for the program)



## Admission Steps:

STEP 01



### Submit Application

Application Form, Review, And Eligibility Approval.

STEP 02



### Appear for the Pre-Screening Test

Covers Programming Foundations, Data Concepts, And Analytical Aptitude.

STEP 03



### Pay Application Processing Fee

Rs 10,000 — Fully Adjustable Against Program Fee On Acceptance. If The Application Is Not Accepted By IIT Jodhpur Or Futureense, This Amount Will Be Fully Refunded. If The Student Withdraws After Acceptance, This Amount Is Strictly Non-Refundable.

STEP 04



### Receive Offer Letter From IIT Jodhpur

Complete Full Payment. Access Futureense Bridge Course — Free, Starts Before Program. Join Your Cohort: August 2026.

Every Person In Your Cohort Cleared The Same Bar. That Changes The Quality Of Every Session And Every Conversation Across Twelve Months.



# Program Details

## — For PG Diploma in Data Engineering

### Duration

12 Months | 330 Hours

### Programme Commencement

August 2026 (Tentative)

### Programme Fee

**Course Fee: ₹3,35,000**

Includes Application Processing Fees of ₹10,000 (Non-refundable)

The Application Processing Fee is included in and adjusted with the course fees, which must be paid at the time of completing the application. If the application is not accepted by IIT Jodhpur or Futureense, this amount will be fully refunded. However, if the student withdraws or drops out for any reason after the application is accepted, this amount is strictly non-refundable.

**Administrative Fee: ₹20,000**

This includes lodging. Meals excluded and is separate from course fees.

\*No refunds post the last date of registration. Fees are subject to change based on the institute's current policy.

### Total Credits

35

### Learning Mode

Live Online Sessions

Immersion once per academic year for 5-7 days

### Program Schedule

**Friday, Saturday and Sunday**

The class schedule will be determined by IIT Jodhpur and is scheduled to take place on Fridays (late evenings), Saturdays, and Sundays, subject to the availability of the faculty.

**Weekly Live Hours:** 10–15 hours (Friday evenings, Saturdays, Sundays)



## Post PGD — Complete MTech In Executive Mode In 1 More Year

Enhance Your Professional Growth By Leveraging Your Academic Credits From The PG Diploma Program And Transferring To IIT Jodhpur's MTech Program In Executive Mode.

### Eligibility to Transition to Mtech (Year 2):

- ▶ Minimum 75% Attendance In PG Diploma
- ▶ Students Should Score At Least CGPA 6.0 And Above In PGD
- ▶ Minimum 60% Aggregate Marks In All Assessments
- ▶ Program Director's Recommendation Based On Academic Performance And Professional Conduct
- ▶ No GATE Examination Required If Eligibility Criteria Are Fulfilled → Payment Of Year 2 Fee (Rs 2,40,000) Upon Approval



Program Fee For Year 2:

**RS 2,40,000**

For More Information:

[Office\\_eep@litj.Ac.In](mailto:Office_eep@litj.Ac.In)





# BRIDGE COURSE

Prepare for your IIT Jodhpur PG Diploma and MTech.\* in Data Engineering and Agentic AI with the Futureense Bridge Course. This foundational program, offered at **No Extra Cost**, equips you for success. It includes **Live Online Training with Industry Experts** and over **30 hours of Self-guided Learning** Materials to master core concepts. The course concludes with an assessment to validate your knowledge.

As students of Futureense executive education programs, you get **exclusive access to our proprietary bridge courses**. These have been carefully curated in partnership with **IIT, industry veterans**, and our **Futureense Leadership Council**. These courses offer a unique guided self-learning roadmap to get up to speed with the prerequisites of the program you will be embarking upon.



Weekly 1 hour of live online training and 30+ hours of self-guided learning



- 01 Programming Foundations
- 02 Databases with MySQL
- 03 Maths Refresher
- 04 Cloud Foundations
- 05 Gen AI, Agentic AI, and Prompt Engineering

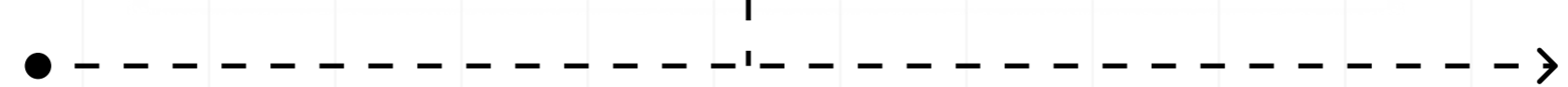
Enrolled



Program Starts

Bridge (day 1 ready)

Where you are now



You are ready



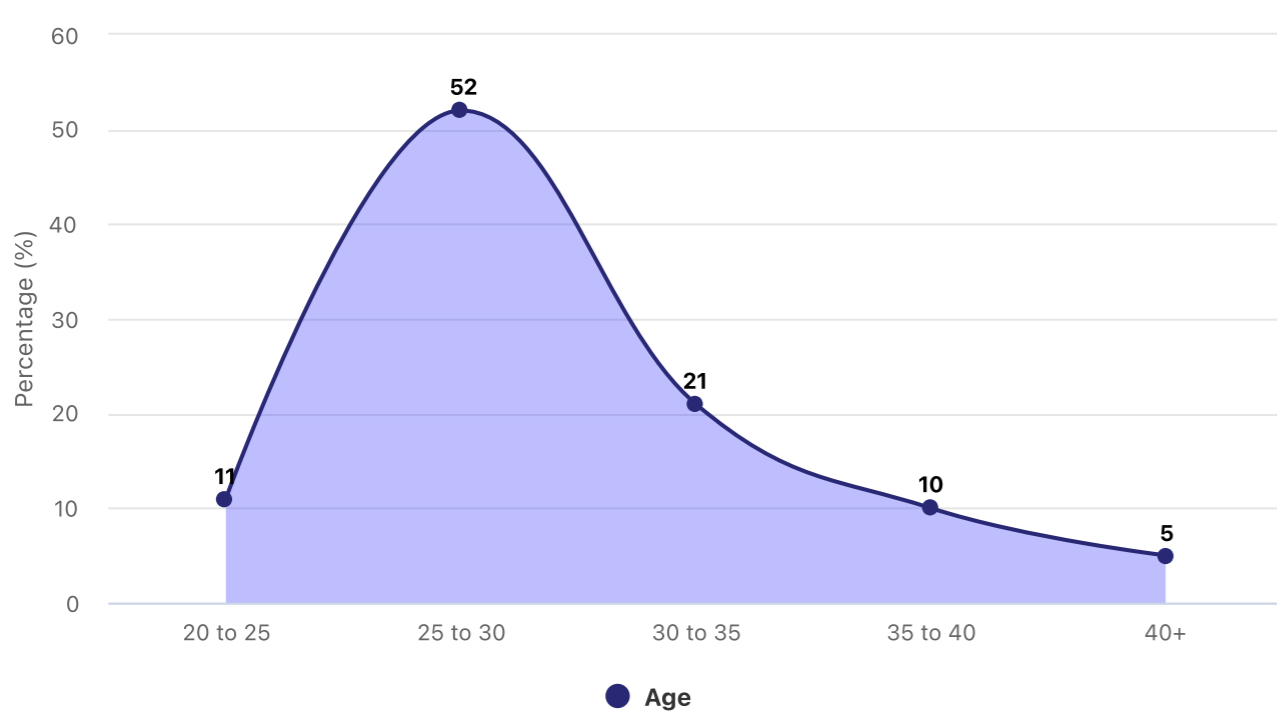
# Cohort Demographics & Profile

(Based on Previous Cohorts — Batches 1 to 5)

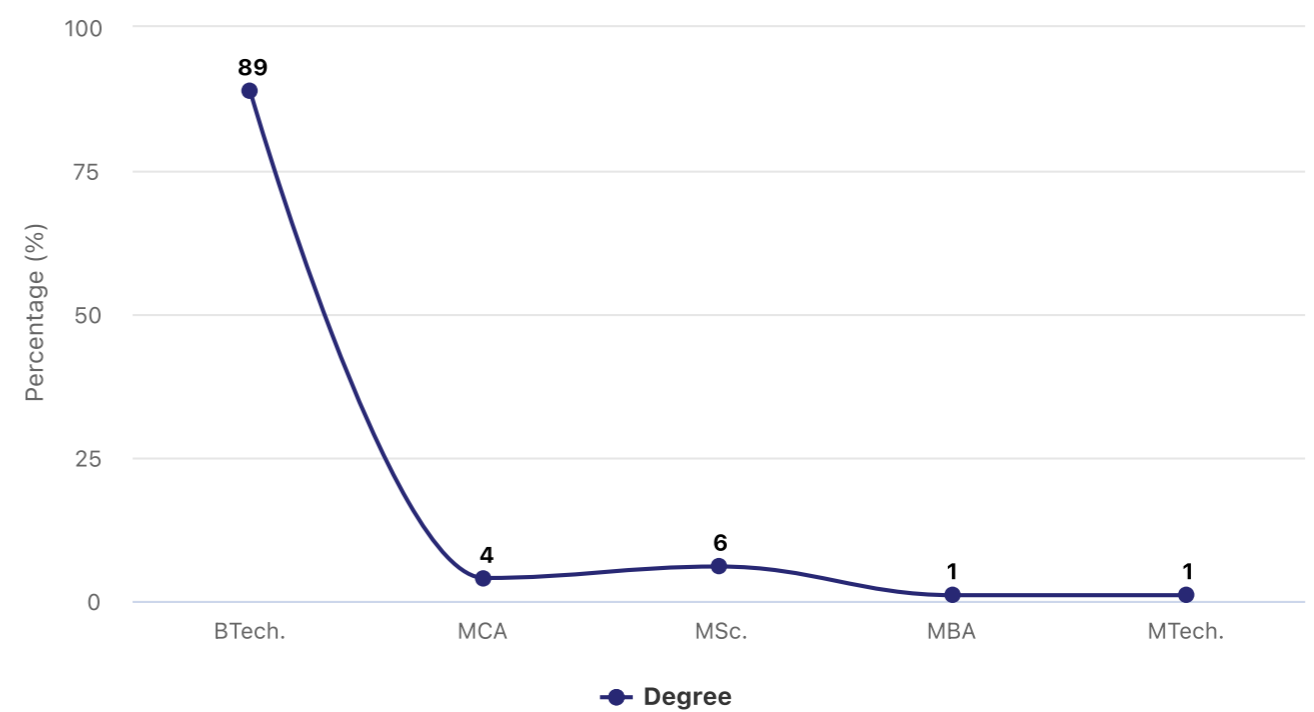
## Cohort Overview

- Average Years of Experience: **4.5 Years**
- Average Age: **29.3 Years**
- Average CTC: **₹13 Lakh**

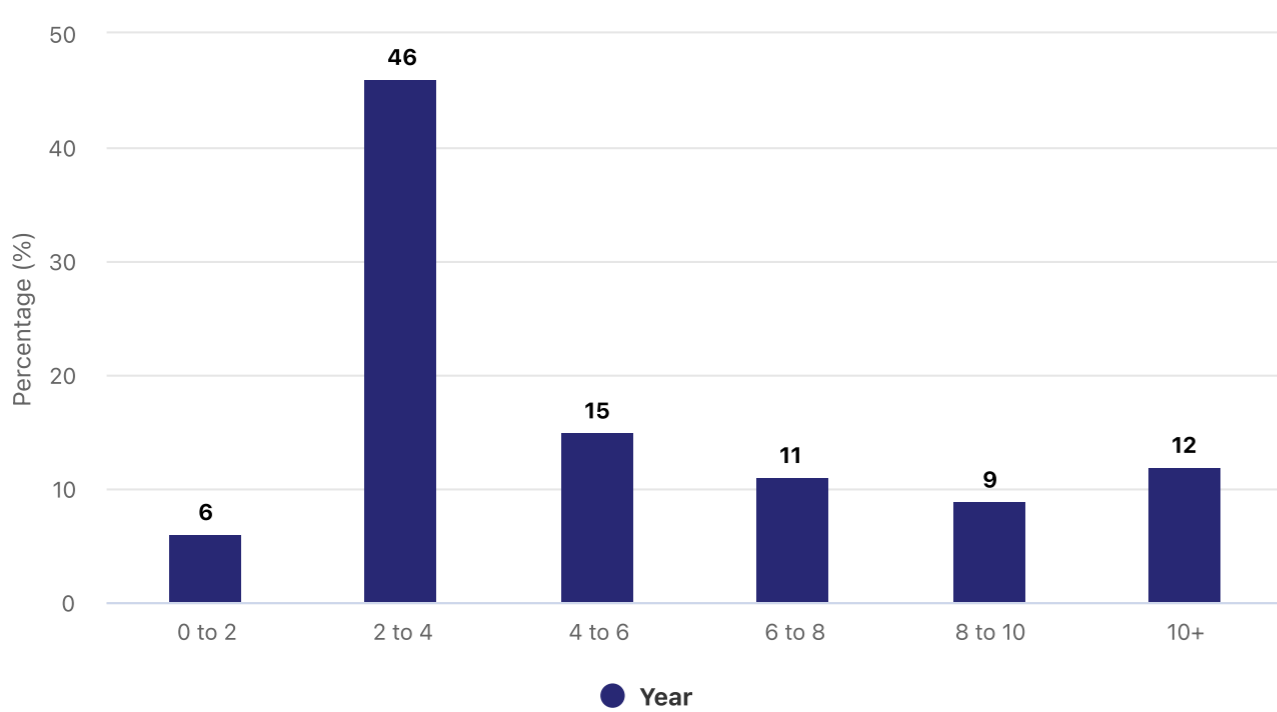
### Age Distribution



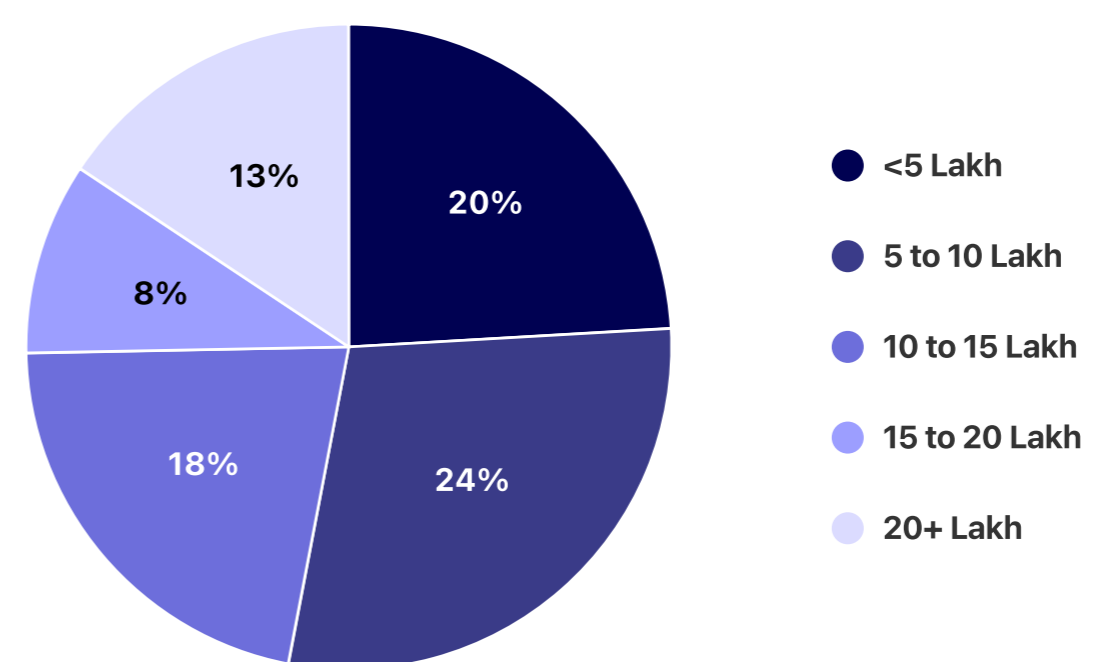
### Educational Background: Highest Degree Attained



### Years of Professional Experience



### CTC Distribution



## Previous Companies



\*Futureense does not offer any employment



# Testimonials

**Arpit Sharma**

*PGD in M.Tech , IIT Jodhpur*



It was a great learning experience. The sessions were well structured and easy to understand. The guidance provided really helped me improve my understanding.

**Mahima Yadav**

*PGD in M.Tech , IIT Jodhpur*



When I first heard about this program, I knew it was an opportunity I couldn't pass up. The curriculum blends theoretical depth with practical, industry-relevant applications in data engineering. The faculty brings both academic excellence and a real-world perspective. The credibility, the network, and the intellectual environment are things you simply cannot replicate elsewhere. A transformative experience I would wholeheartedly recommend to any professional serious about data engineering.

**Aparna Raturaj Mundke**

*PGD in M.Tech , IIT Jodhpur*



My experience with Futureense in association with IIT Jodhpur has been really positive. They bring strong technical skills and a practical approach to solving problems. What I appreciate most is the reliability and communication — responsive, easy to work with, and genuinely invested in getting things right. In a fast-paced environment like IIT Jodhpur, they have shown the ability to adapt quickly while maintaining high standards. I'd definitely recommend Futureense to anyone looking for a dependable and forward-thinking learning partner.

**Anirban**

*PGD in M.Tech , IIT Jodhpur*



Futureense has made higher studies achievable. Thanks to the team for the relentless efforts that go behind the scenes to make it a reality.

**Shantanu Singh Rao**

*PGD in M.Tech , IIT Jodhpur*



Futureense provided an excellent platform to pursue M.Tech from IIT Jodhpur, significantly enhancing my expertise in Data Engineering and Artificial Intelligence while opening valuable opportunities to learn, grow, and advance my career.



# About IIT Jodhpur



The Indian Institute of Technology Jodhpur was founded in 2008 with a focus on technology education and research to promote the economic development of India. Its permanent campus is spread over 852 acres and has state-of-the-art facilities for research and academic activities. The institute is committed to a multidisciplinary approach to technology development and has organized its degree programs through departments and research activities through centers for technologies.

In addition to its focus on traditional education, IIT Jodhpur has been actively pursuing programs in executive mode for working professionals. The institute has been leveraging its academic expertise, industry collaborations, and infrastructure to create a range of high-quality programs that cater to the needs of today's professionals. Its faculty members, with extensive industry experience and academic expertise, bring a unique blend of theoretical knowledge and practical experience to the classroom.

To establish itself as a leader industry aligned programs for professionals, IT Jodhpur has been developing programs that are relevant and contemporary to the evolving needs of the industry. It has also established strong industry linkages to develop customized programs that cater to the specific needs of their employees. The institute has invested in state-of-the-art infrastructure, modern classrooms, well-equipped labs, a vast collection of books and research papers in the library, and online learning platforms and tools to provide an immersive learning experience to the participants.



# Futureense Leadership Council



**Divesh Singla**

Vice President, Global Operations and Head, APAC



**Alok Tiwari**

Director Of Analytics



**Anand Das**

Chief Digital & AI Officer



**Ankit Mogra**

Director - Insights & Analytics



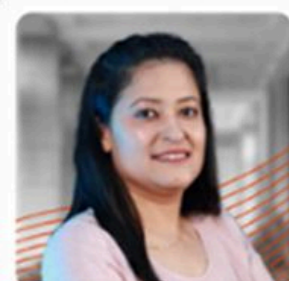
**Nitin Srivastava**

Global Head of Data and Analytics



**Muthumari S**

Global Head of Data & AI Studio



**Ishu Jain**

Head Of Central Analytics



**Pankaj Rai**

Group Chief Data and Analytics Officer



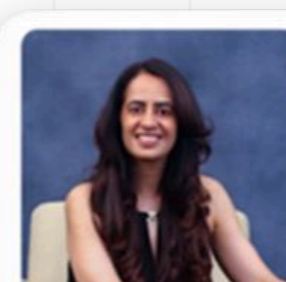
**Nithya Subramanian**

Senior Director Data and AI COE



**Satyakam Mohanty**

Founder & Managing Partner



**Supria Dhanda**

Co-Founder & Managing Partner



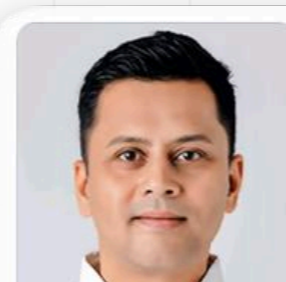
**Madhu Hosadurga**

Global Vice President, Enterprise AI



**A V Rahul**

Director, Analytics



**Tushar Sahu**

Director Engineering, Google



**Swati Jain**

Partner - Digital, AI & Analytics, Deloitte



**Kaushik Das**

Managing Director



**Shrisha Ray**

Director of Engineering



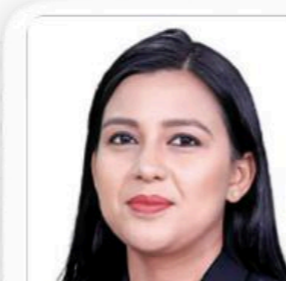
**Pankaj Srivastava**

Partner



**Saurabh Kumar**

Director - Data Engineering



**Madhurima Agarwal**

Managing Director -Microsoft for Startups



**Anupam Gupta**

Independent Consultant- AI/ ML Product Development





**Arvind Balasundram**

Executive Director, Commercial Insights & Analytics



**Ashish Dabas**

Vice President



**Praveen Sathyadev**

Head Business Growth (VP) - Analytics, Insights and AI



**Swati Jain**

Partner - Digital, AI & Analytics



**Bhargab Dutta**

Chief Digital Officer



**Srini Oduru**

Head of IT Delivery and Operations



**Akshay Kumar**

Research & Analytics Leader



**Anirban Nandi**

Head of AI Products & Analytics (Vice President)



**Indrani Goswami**

Associate Director



**Vishal Nagpal**

Director of Data and AI



**Tushar Sahu**

Director Engineering



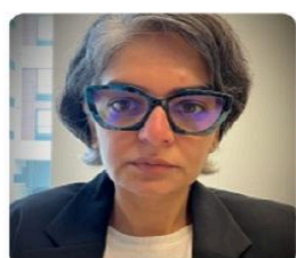
**Sumon Mal**

Director Engineering



**Monica S Pirgal**

Chief Executive Officer



**Deepa Mahesh**

Head - Analytics, BPS



**Krithika Muthukrishnan**

Chief Data Science Officer



**Madhurima Agarwal**

Managing Director - Microsoft for Startups



**Tushar Chahal**

Chief Technology Officer



**Ruchika Singh**

Director, Data Science & Insights



**Sulabh Jain**

Chief Analytics Officer



**Gaurav Srivastava**

Analytics Business Intelligence Leader



**Arpit Agarwal**

Data Science Manager



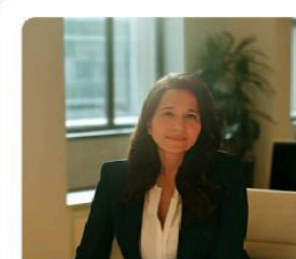
**George Joseph**

Global head of analytics, customer experience - support operations



**Pramod Rawat**

Director



**Vidhi Chugh**

Head of AI



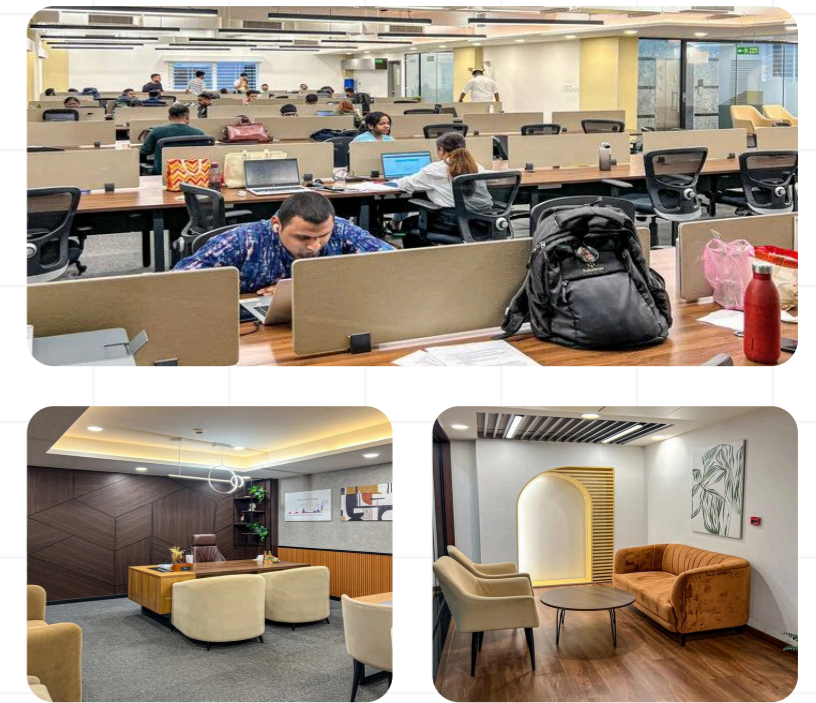
& Many More...



# About Futureense Technologies

Futureense Is **India's Fastest-Growing AI-Skilling Company**, Dedicated To Accelerating India's Role In Global AI Development.

With Projections From EY's "**India@100**" Report Indicating That **24.3% Of The Incremental Global Workforce** Over The Next Decade Will Be Indians By 2030, We Are Committed To Positioning India At The Forefront Of AI Evolution.



Our Mission Is To Scientifically Map AI Talent Demand And Create Scalable, Industry-Aligned Upskilling Models That Equip Indian Professionals With Cutting-Edge Capabilities. By Integrating Real-World Applications With Academic Excellence, We Are Building Tomorrow's Leaders Across Every Possible Funnel, Shaping The Talent That Will Define Tomorrow.

**3M+** Learner Community

**70+** University Collaborations

**100+** Mentors And Experts

**25K+** Careers Transformed

**10+** IIT/IIM Partnerships

**540+** Trusted Hiring Partners

**400+** Futureense Team Strength



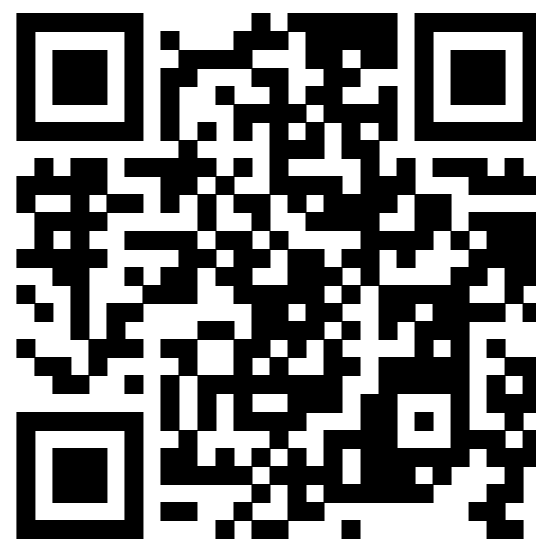
and many more...



3 Layers • 12 Months

# One IIT Jodhpur Degree

And a Career Ceiling that just Moved



Apply Now

## IIT Jodhpur

📍 NH 62, Surpura Bypass Road, Karwar,  
Jodhpur, Rajasthan 342030

☎ +91 92667 54756

✉ [iitj.pgddeai@futureense.com](mailto:iitj.pgddeai@futureense.com)

## Futureense Technologies

📍 Incubex HSR23, 19th Main Rd, Sector 4,  
HSR Layout, Bengaluru - 560102

☎ +91 92178 43137

✉ [info@futureense.com](mailto:info@futureense.com)

